



# **Key ingredients for effective adaptation strategies**

**Eline Orheim**

**Senior Advisor**

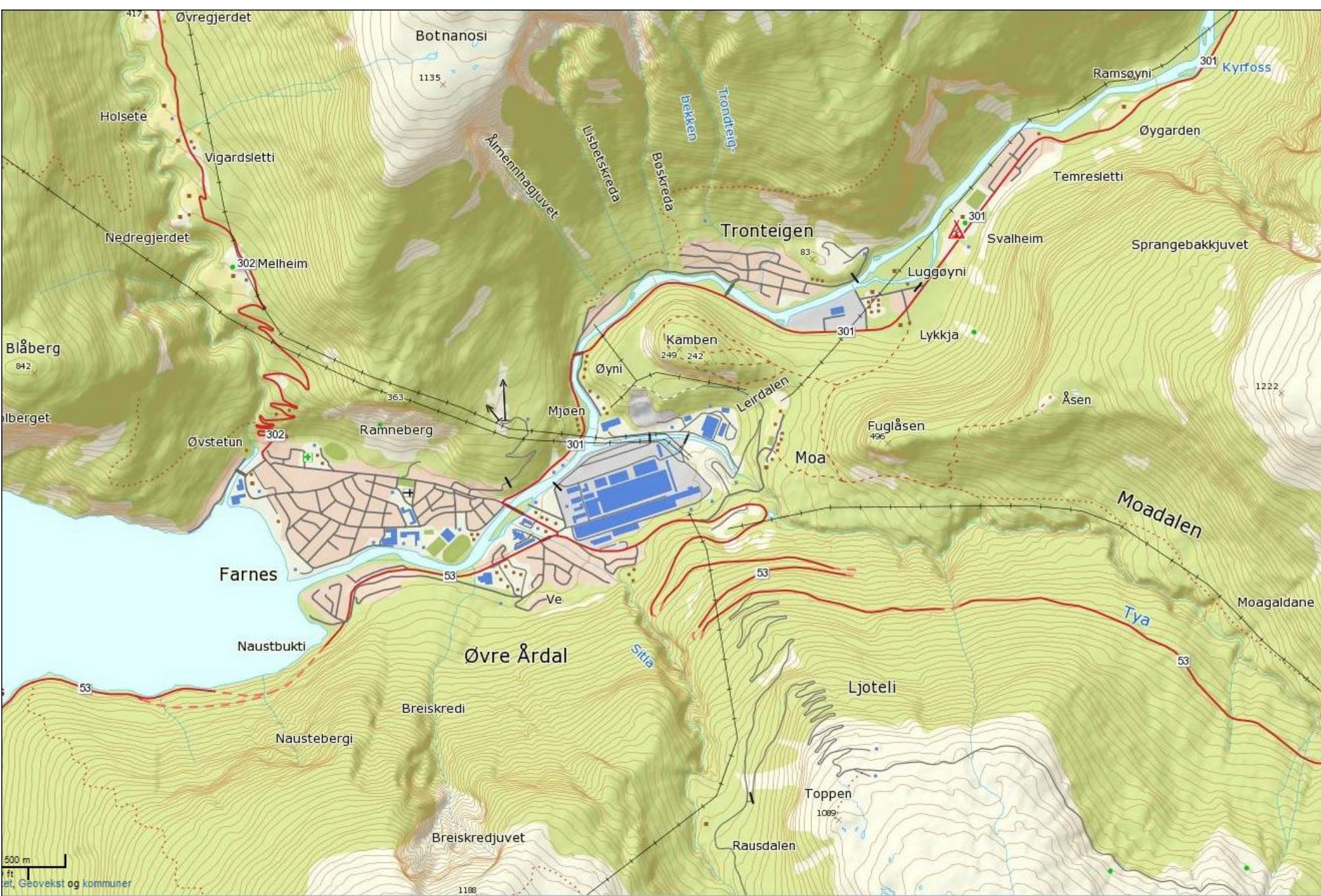
**Emergency Planning and Preparedness  
County Governor of Sogn og Fjordane**



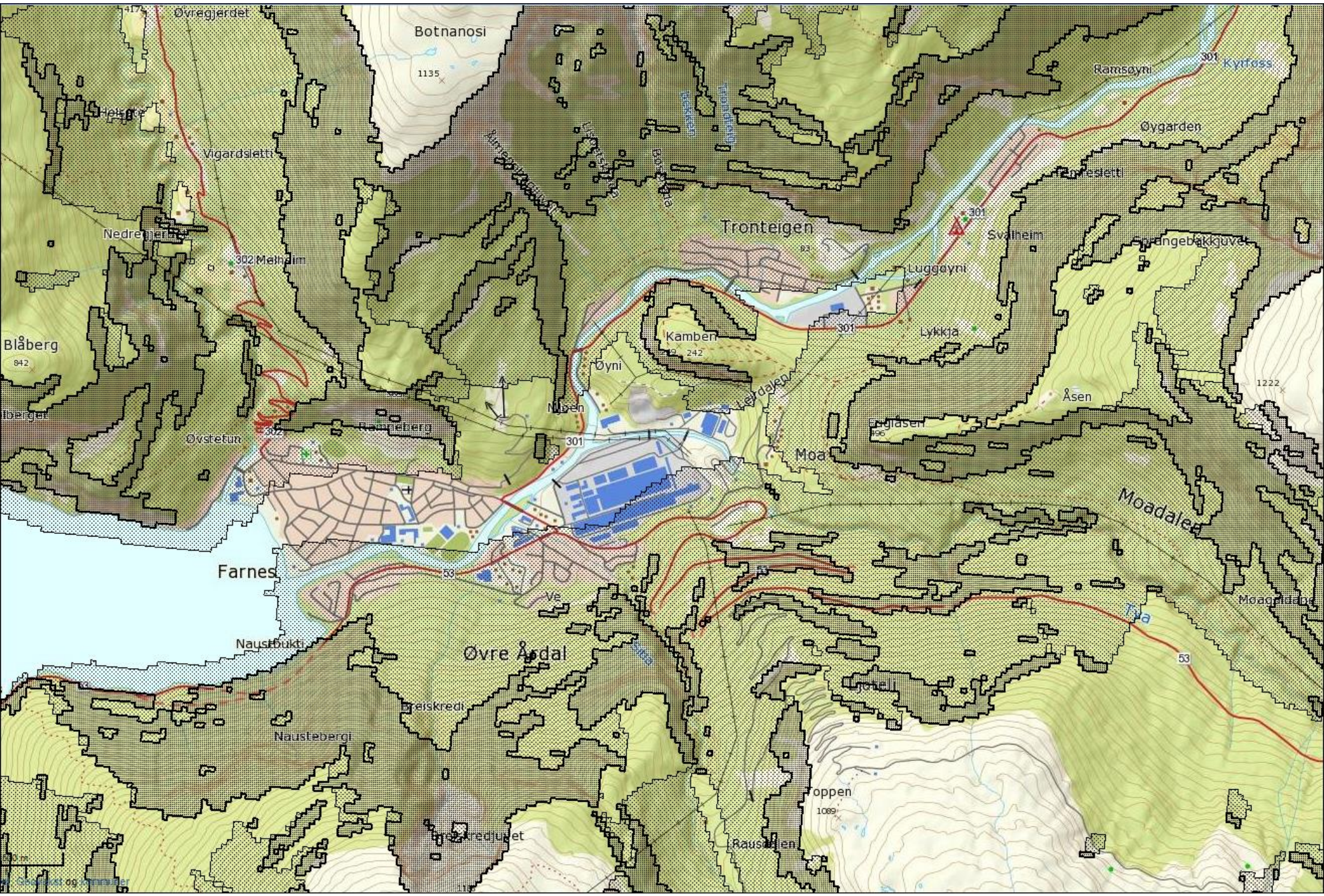
## Starting point

- We know less than we want, but still more than we need to act.
- That means, among other things:
  - Mapping of risk and vulnerability

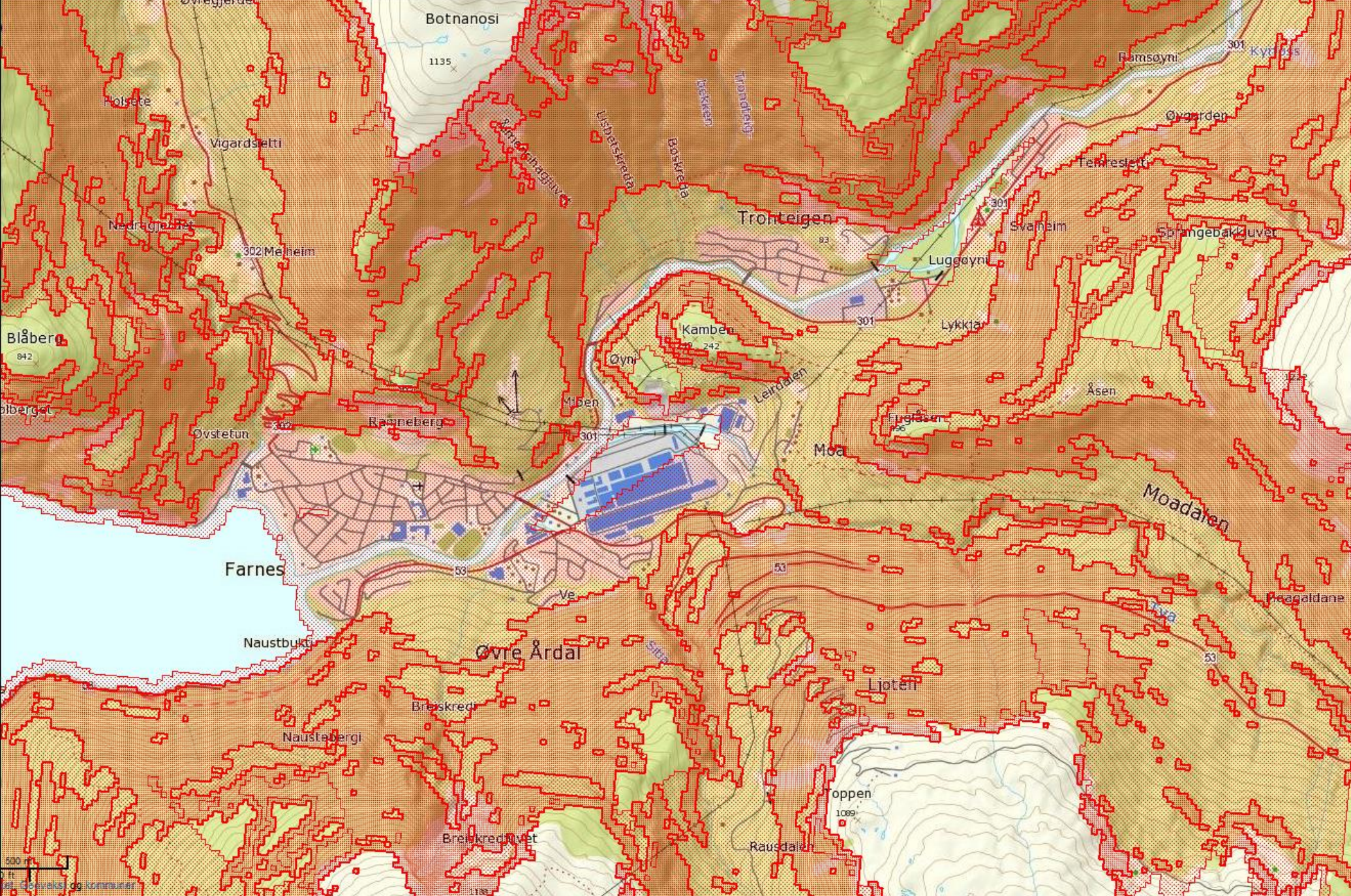
















## Starting point

- We know less than we want, but still more than we need to act
- That means, among other things:
  - Mapping of risk and vulnerability
  - Safeguarding measurements
  - Better maintenance (especially critical infrastructure)
  - Spatial planning that takes the consequences of climate change into account (through risk- and vulnerability analyses)



# Making a local adaptation strategy for Sogndal Municipality

- Temperature
- Percipitation
- Sea level rise

Klima- og energiplan  
for



Sogndal kommune



## **Warmer, wetter, wilder: main consequences for Sogndal**

- Life and health:  
residential areas
- Water supply and  
drainage system
- Agricultural sector
- Transport and  
infrastructure
- Municipal planning and  
need for RVA





# Warmer, wetter, wilder... How will this effect a local society?



## Main risks:

- Landslides/ avalanches/ rockfall
- Floodings
- Sea level/ storm surges



- Threat towards resident areas – injury/ death
- Can we live where we live?
- Closed roads and delays
- Higher costs – barriers and maintenance
- Loss of cultural heritage





## The County Governor's strategy

- We reject land use plans where climate change consequences are not analysed
- We control that the municipalities include adaptation in their overall risk and vulnerability analyses
- We guide the municipalities on how to include climate change adaptation in their planning work
- We build networks and cooperate across levels, sectors and authorities







## Some challenges and strains

- Capacity
  - Climate knowledge
  - Practical tools
  - Funding
- Anchoring
  - Awareness
  - Scepticism

