



# **Key ingredients for effective adaptation strategies**

**Haavard Stensvand  
Head of emergency planning  
County Governor of Sogn og Fjordane**



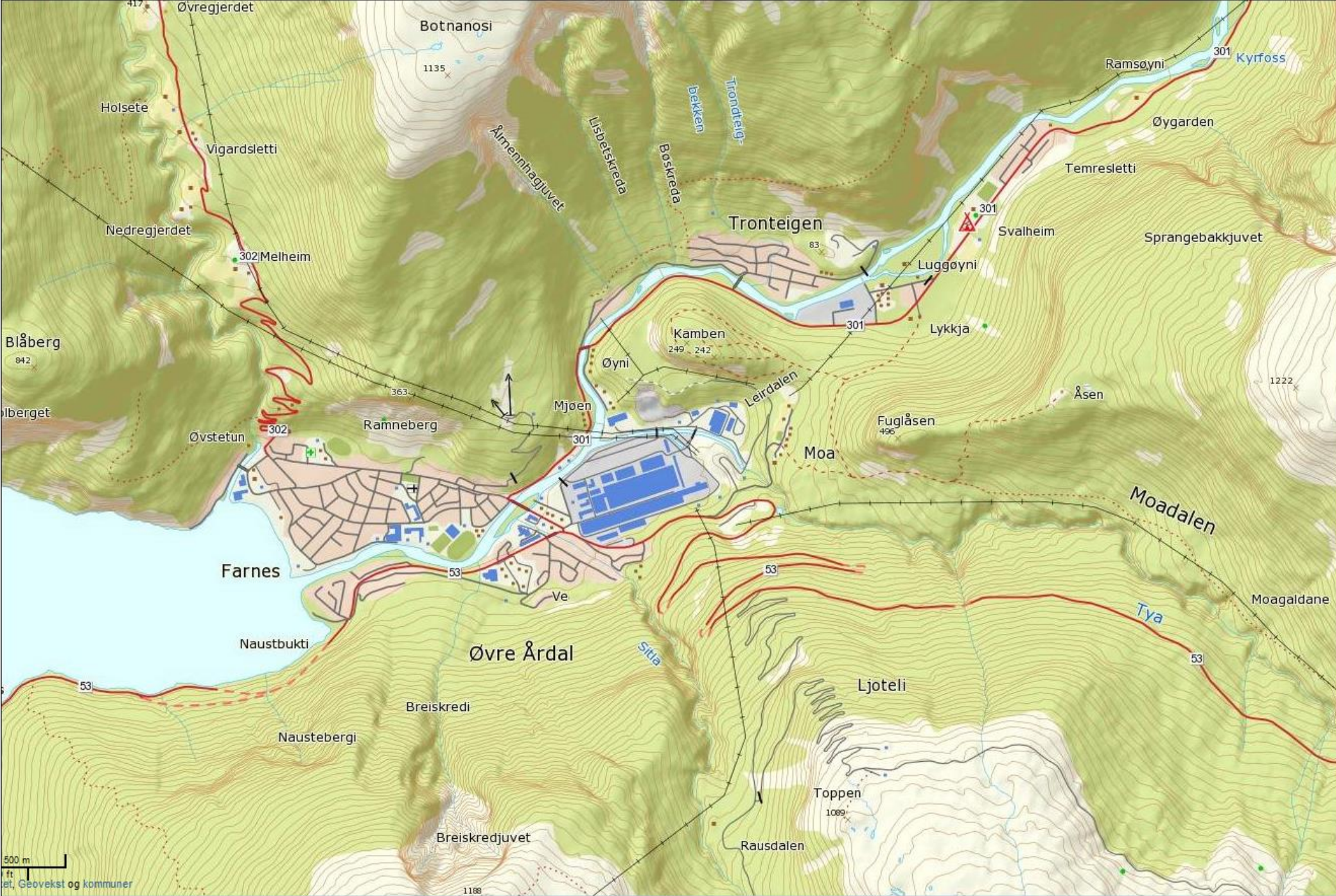
## Starting point

- We know less than we want, but still more than we need to act
- That means, among other things:
  - Mapping of risk and vulnerability

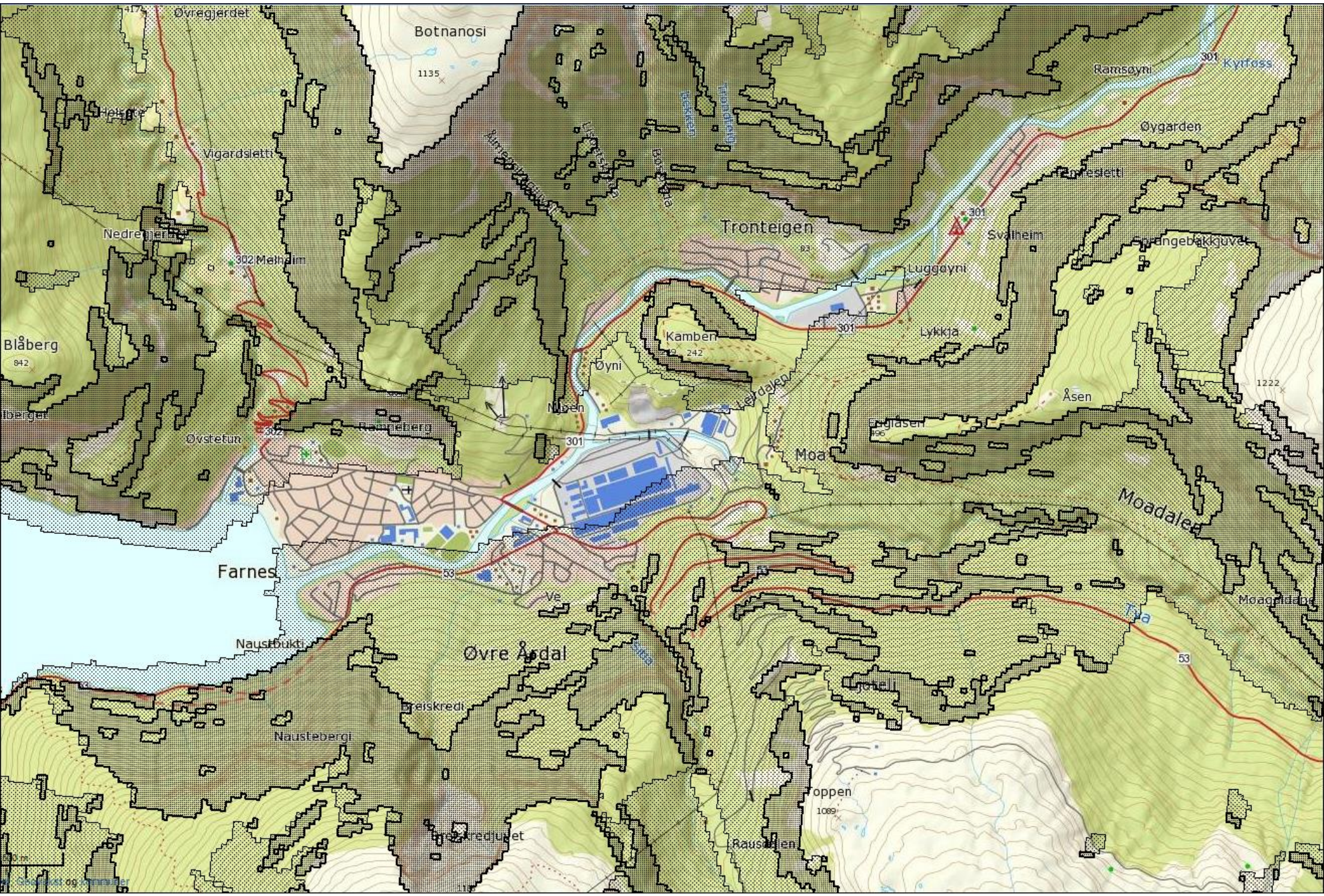


Foto: Petter Øgar

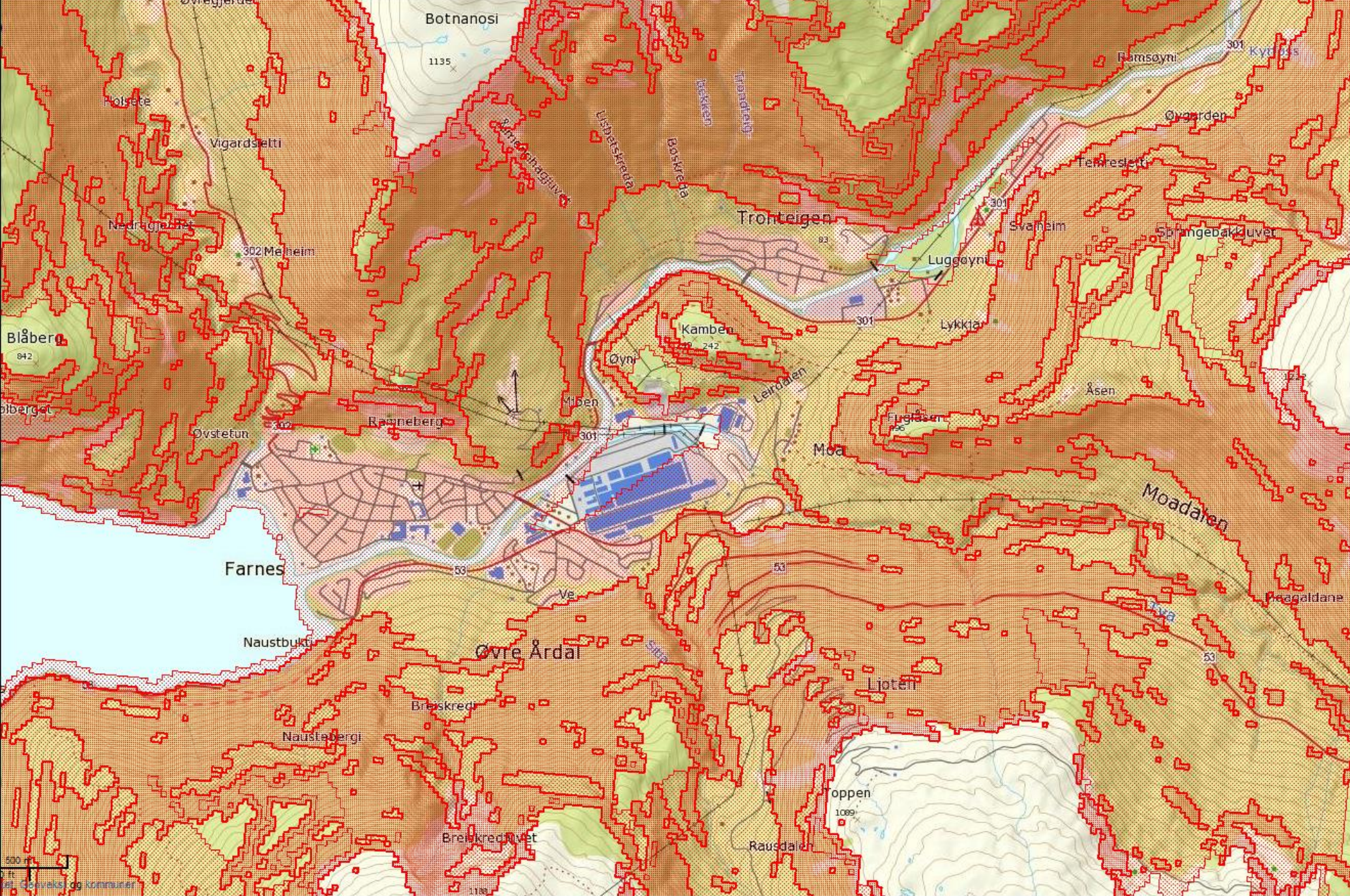




















## The County Governor's strategy

- We reject land use plans where climate change consequences are not analysed
- We control that the municipalities include adaptation in their overall risk and vulnerability analyses
- We guide the municipalities on how to include climate change adaptation in their planning work
- We build networks and cooperate across levels, sectors and authorities





## Some challenges and strains

- Capacity
  - Climate knowledge
  - Practical tools
  - Funding
- Anchoring
  - Awareness
  - Scepticism

