

THE IMPLEMENTATION OF A NEW EDUCATIONAL AND INFORMATIONAL SYSTEM ON ADAPTATION TO CLIMATE CHANGE IN NEAMŢ COUNTY, ROMANIA



Students: Andrei NIŢOAIA

Ionuț-Răzvan PONCIȘ

Babeș - Bolyai University, Cluj – Napoca



PRESENTATION OF THE PROJECT – BEFORE INTERNSHIP

- Main **goal**: *avoiding the damages related to climate change mismanagement events and the improvement of people reaction and adaptation.*
- Two main **objectives**: - *public awareness*
- *students education*
- Activities: informing people through local media; educating students from different schools through two workshops, in two different periods.

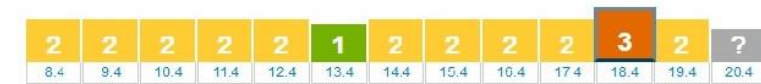


THE NEW PERSPECTIVE

- During this internship, we managed to broaden our horizons regarding to our project:
 - visiting University of Sogndal, we find out about the existence of the VARSOM phone application (it presents forecasts and warnings for several types of geohazards – floods, avalanches and landslides).



- VARSOM WEATHER FORECAST AND WARNINGS WEBSITE (IN THIS CASE, AVALANCHES)



Published 4/17/2016 at 15:08

Avalanche forecast for Fjordane, Monday 4/18/2016

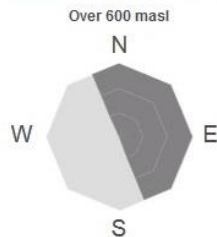
Generally unstable conditions in higher terrain. Avoid lee areas with wind deposited snow, typically behind ridges, ribs and in gullies. Naturally triggered avalanches may occur.

A few bigger avalanche may occur

Avalanche problem 1

Storm slab

Buried weak layer of new snow



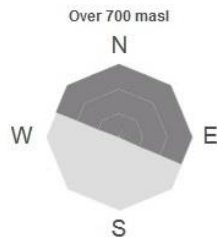
Avalanche type	Slab avalanche
Avalanche size	3
Trigger/release	Naturally released
Distribution	Single hazard sites
Probability	Possible

The avalanche problem is generally widely distributed on any steep slope with deep new snow. Look for cohesive new snow that breaks apart or is poorly bonded to the old snow. Cracks around your skis are a typical sign.

Avalanche problem 2

Storm slab

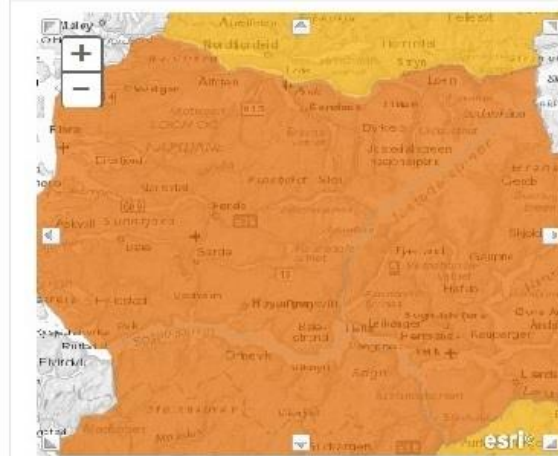
Buried weak layer of new snow



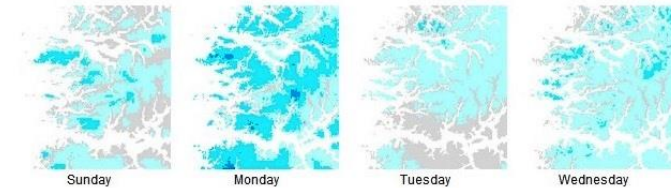
Avalanche type	Slab avalanche
Avalanche size	3
Trigger/release	Small additional load
Distribution	Some steep slopes
Probability	Possible

The avalanche problem is generally widely distributed on any steep slope with deep new snow. Look for cohesive new snow that breaks apart or is poorly bonded to the old snow. Cracks around your skis are a typical sign.

Warning for 4/18/2016



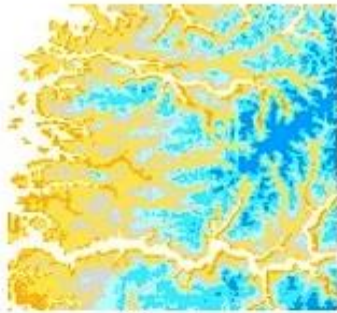
New snow



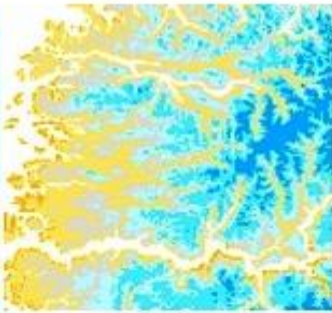
Wind



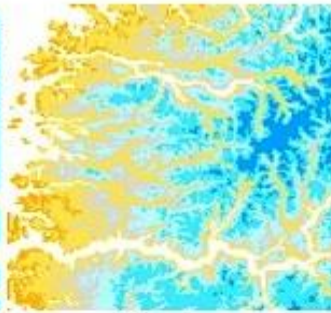
Temperature



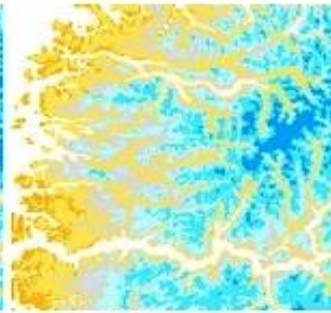
Sunday



Monday

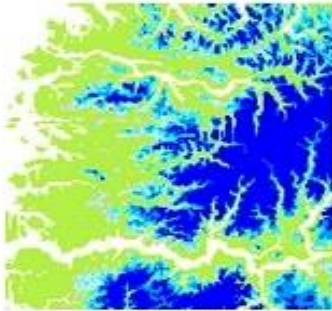


Tuesday

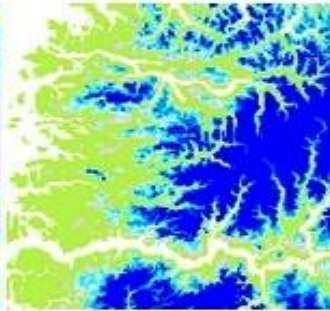


Wednesday

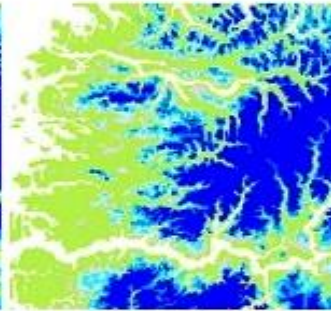
Snow depth



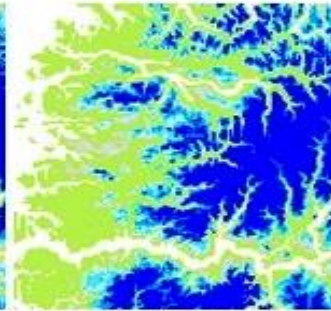
Sunday



Monday

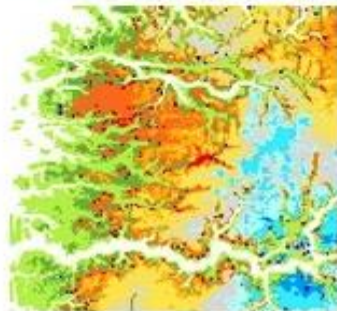


Tuesday



Wednesday

Snow amount in %



Monday



VAR SOM APPLICATION INTERFACE



NEW PROPOSALS:

- In Neamț county are a few villages that use a sirene as warning system, but there are many uncertainties:
 - Do people know how to react?
 - Do they know what's the warning for?
 - Is there any shelter if an extreme weather event occur?



Solution?

- Launch of an weather forecast and warning system phone application
 - Challenges– many people dont have acces to the internet;
 - old people can not afford an smartphone or they dont know how to use it;
 - the costs are high.

We propose: the colloboration between local authorities and the NGO`s with the purpose of informing people from the above-mentioned category.

If there are no NGO`s, we want to launch one.



- Building shelters to house people if some extreme weather events occur.
 - We need to find out:
 - If there are shelters;
 - The best location for the shelters (the necessity of geological studies resulting in maps – by using GIS).
- Regarding to the students education part, we found a strenght:
 - The actual infrastructure (ESCI actions) — costs reduction;
 - Earthquakes
 - Fires



CONCLUSIONS

We need to improve the cooperation between institutions from different parts of the country, from different fields;

We propose the collaboration between local authorities and the NGO`s

Implementing a project on students education and public awareness regarding to climate change adaptation means to develop a sustainable system which will help learning, by the new generations, a behaviour increasingly more appropriate in terms of adaptation to climate change.



Feedback



**THANK YOU FOR YOUR ATTENTION
&
TUSEN TAKK FOR GJESTFRIHETEN DIN !**

"Give a man a fish and you feed him for a day; teach a man to fish and you feed him for a lifetime."

